

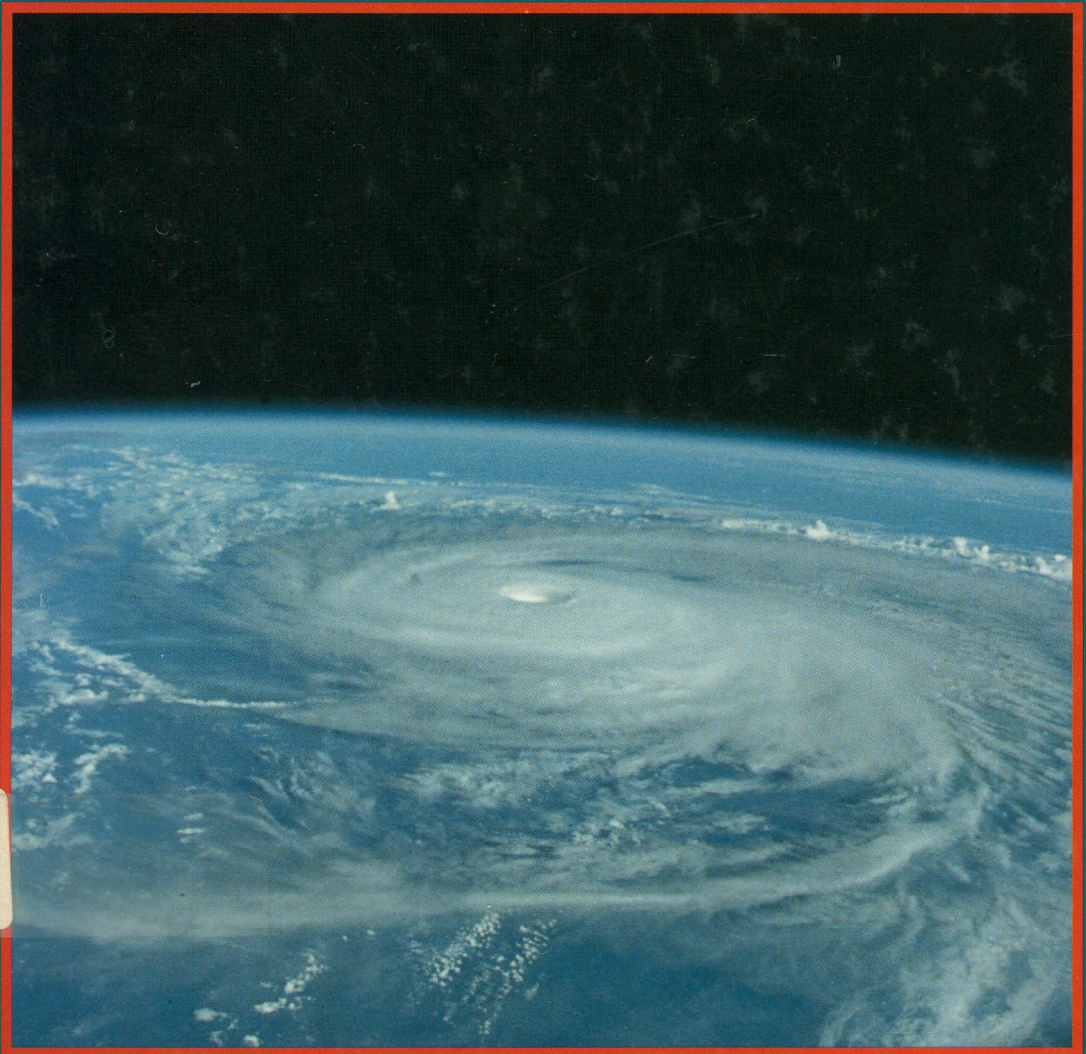
 WILEY

WILEY-PRAXIS Series In
Remote Sensing

 PRAXIS

EARTHWATCH

The Climate from Space



John E. Harries

EARTHWATCH

The Climate from Space

John E. Harries

Professor of Earth Observation

Blackett Laboratory

Imperial College of Science, Technology and Medicine

University of London

3113894 INSTITUT
FÜR METEOROLOGIE U. KLIMATOLOGIE
UNIVERSITÄT HANNOVER
HERRENHAUSER STR. 2 - 30419 HANNOVER

JOHN WILEY & SONS

Chichester • New York • Brisbane • Toronto • Singapore

PRAXIS

Published in association with

PRAXIS PUBLISHING

Chichester

Table of contents

Foreword	9
Author's preface	11
Acknowledgements	15
List of illustrations	19
List of tables	23
1 INTRODUCTION	25
1.1 Background to the book	25
1.2 Historical perspectives of the planet Earth	27
2 THE CLIMATE SYSTEM	30
2.1 Basic principles	30
2.1.1 Energy	30
2.1.2 Complexity of processes	30
2.1.3 Heat capacity	33
2.1.4 Characteristic time and space scales	34
2.1.5 Radiation balance	35
2.1.6 Spectroscopy	38
2.1.7 More advanced radiation transfer	41
2.1.8 Variability and predictability of climate	47
2.2 The atmosphere	49
2.2.1 Composition and basic properties	49
2.2.2 Spectral properties	52
2.2.3 Chemistry	53
2.2.4 Dynamics	55
2.3 Clouds	56
2.3.1 Clouds and radiation	56
2.3.2 Model results	59
2.3.3 Satellite data	59

2.4	The oceans62
2.4.1	Basic properties62
2.4.2	Heat storage and energy balance65
2.4.3	Dynamics65
2.4.4	Spectral properties of the ocean67
2.4.5	Chemical effects, aerosols, and the biosphere71
2.5	Land72
2.5.1	Heat capacity and temperature variations72
2.5.2	Models of land surface processes73
2.5.3	Spectral properties of land surfaces74
2.5.4	Chemical effects, dust and the biosphere80
2.6	The cryosphere — ice and snow83
2.6.1	Water storage and sea level83
2.6.2	Radiative exchange effects85
2.6.3	Spectral properties of ice and snow86
2.6.4	Effect on circulation — the polar vortex88
2.7	Modelling the climate88
2.7.1	Introduction88
2.7.2	What is a model? The case of the Atmospheric Global Circulation Model (AGCM)89
2.7.3	Ocean, cryosphere, land surface and biosphere models92
2.7.4	Coupled models93
2.7.5	Model results to date94
2.7.6	Other types of model95
3	CURRENT CLIMATE ISSUES: OZONE HOLES, GREENHOUSES, AND EL NINO98
3.1	The ozone hole99
3.1.1	A primer on stratospheric ozone99
3.1.2	The observations	101
3.1.3	The theories	105
3.1.4	Relevance of observations from space	109
3.2	The greenhouse effect	110
3.2.1	Radiative equilibrium in a real atmosphere	110
3.2.2	Observed variations in surface temperature	116
3.2.3	Results of model simulations	119
3.2.4	Relevance of observations from space	126
3.3	'El Nino'	127
3.3.1	The phenomenon	128
3.3.2	Related phenomena	129
3.3.3	Final comments on El Nino	133
3.3.4	The role of space	134
3.4	Postscript to Chapter 3	135
4	SPACE OBSERVATIONS — PRINCIPLES	136
4.1	Orbits	137

4.2	Observational modes	139
4.2.1	Remote sensing of the surface.	139
4.2.2	Remote sounding of the atmosphere (nadir)	140
4.2.3	Remote sounding of the atmosphere (limb sounding)	143
4.3	Instrumental principles	145
4.3.1	Infrared limb sounding radiometer.	146
4.3.2	Microwave radiometry	150
4.3.3	Visible and IR imager for the polar platform	156
4.3.4	Radar altimetry	158
4.4	Spacecraft	163
5	SPACE OBSERVATIONS — SOME EXAMPLES.	175
5.1	Satellite observations of ozone and other trace constituents in the stratosphere	176
5.1.1	Ozone hole observations	176
5.1.2	Global ozone and other trace constituents measured by LIMS	178
5.2	Satellite observations of sea surface temperature	178
5.3	Satellite observations of polar ice	180
5.4	Satellite observations of the ocean surface.	182
5.5	Satellite observations of clouds	185
5.6	Satellite observations of the land surface.	188
5.7	High resolution infrared spectroscopy of the atmosphere	191
6	THE FUTURE — THE SPACE STATION ERA	195
6.1	The future	195
6.2	The space station era	197
6.3	Final remarks	204
	References	206
	Index	211
	Plate section between pp. 96–97	